

A6610

HW

Application

Note

AIXLINK Confidential

Revision History

Date	Version	Summary of Changes
2022.11	1.0	First Release
2023.03	1.1	Update Kit Usage and Burning

Note:

Adding/ Removing contents in this document may create a numbering mismatching of sections, tables, pictures existing in the revision history above over the time. And the associated cross-references could be useless because the pointed objects are different than expected or don't exist anymore.

Notice

1. Disclaimer

AIXLINK® releases no license, whether express, implied, arising by estoppel or otherwise, of any intellectual property right is granted by this document.

AIXLINK® makes no representations or warranties with respect to the accuracy or completeness of the contents of this document.

AIXLINK® reserves the right to discontinue or make changes to specifications and product descriptions at any time without notice.

AIXLINK® assumes no liability for any damages or consequences resulting from the use of this document.

AIXLINK® strongly recommended to contact the local sales office to obtain the latest specifications and product descriptions as well as any other useful detail before placing any order.

2. Copyright and confidentiality

Copyright© 2022 AIXLINK ® Corporation. All Rights Reserved.

Any and all information written and provided under this document is AIXLINK® 's confidential information and shall be maintained as confidential. The receiver shall not disclose AIXLINK® 's confidential information to any third party, reproduce, duplicate, copy or otherwise distribute or disseminate without AIXLINK® 's prior written approval.

No part of this document may be reproduced, distributed, transmitted in any form or by any means, including photocopying, recording and other electronic or mechanical methods, without AIXLINK® 's prior written permission, except in the case of brief quotations embodied in critical reviews and certain other noncommercial uses permitted by copyright law.

3. Acknowledgement

Third-party brands and names mentioned in this document are for identification purpose only and may be the property of their respective owners.

Supply of this implementation of Third-party Technology does not convey a license nor imply a right under any patent, or any other industrial and intellectual property right of Third-party to use this implementation in any finished end-user and ready-to-use final product.

Besides it is hereby notified that a license for such use is required from Third-party.

About

This document provides general information about the A6610 EVK mode.

This document is intended for FAE engineers, Hardware design engineers, and contains confidential proprietary information for authorized personnel only. It may not be disclosed to any unauthorized personnel without the prior written consent of AIXLINK® Corporation.

It is recommended to keep in touch with AIXLINK® R&D for the latest updates.

AIXLINK Confidential

Contents

1.	Introduction	5
1.1	Block Diagram	5
1.2	A6610 EVK module features	5
2.	Hardware connection	6
2.1	Install USB to UART driver	6
2.2	Device connection	6
3.	Burning Applications.....	7
3.1	Burning Software	7
3.2	Burning Process	7

List of Figures

Figure 1: A6610 EVK KIT	5
Figure 2: A6610 EVK KIT Interface	5
Figure 3: Install driver	6
Figure 4: EVK KIT power supply and programming control	6
Figure 5: Baud rate setting	7
Figure 6: Bin and Config.ini setting	7
Figure 7: Burning interface	8
Figure 8: Burning steps	8
Figure 9: Enter Download mode.....	9

1. Introduction

The A6610 EVK module integrates various transmission interfaces such as I2C, I2S, SPI, SDIO, UART, etc., and is equipped with USB to UART base for users to carry out RF related testing and software system development. Simply connect to USB for operation.

1.1 Block Diagram

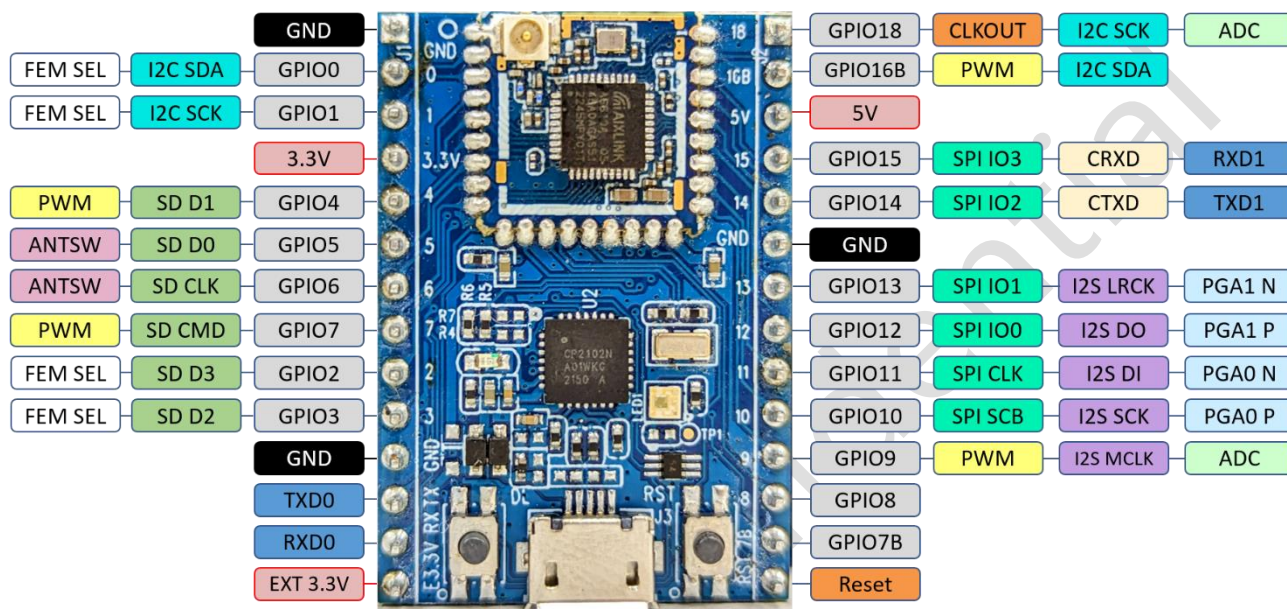


Figure 1: A6610 EVK KIT

1.2 A6610 EVK module features

- 1 micro-USB 5V power supply ;
- 2 I2C interfaces ;
- 2 UART interfaces ;
- 1 SPI interface ;
- 1 I2S ;
- 1 SDIO interface ;
- 1 I-pex connector ;
- 2 push button switches ;
- 1 full-color RGB LED light ;
- 1 power indicator light ;

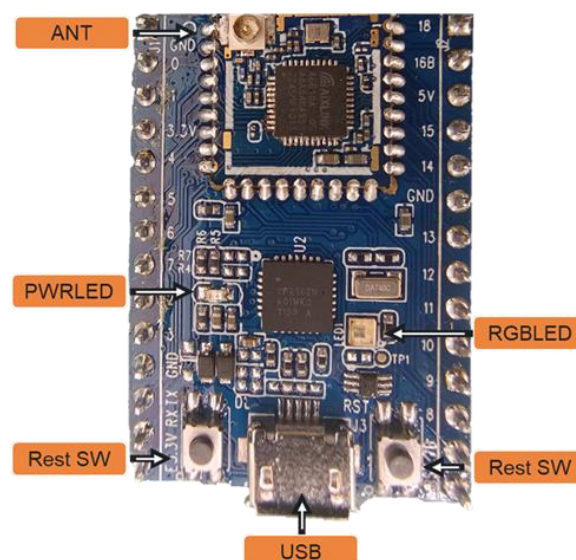


Figure 2: A6610 EVK KIT Interface

2. Hardware connection

2.1 Install USB to UART driver

The A6610 EVK KIT is equipped with the CP2102 IC, which can read UART logs directly through the micro USB on the board, and requires the Silicon Labs CP210x USB to UART Bridge driver to be installed on the PC before use, which can be downloaded via Internet search.

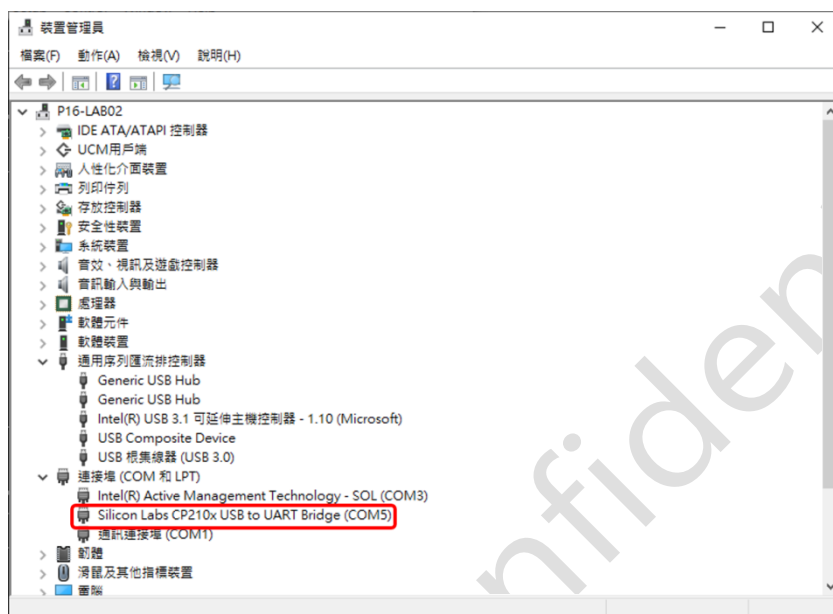


Figure 3: Install driver

2.2 Device connection

The A6610 EVK KIT is powered by USB 5V power supply. After powering up, use the serial software to read the UART console log (Tera Term is used in the example), and set the baud rate to 115200. When burning, press and hold the Download button and short press the Reset button to enter the Download mode.

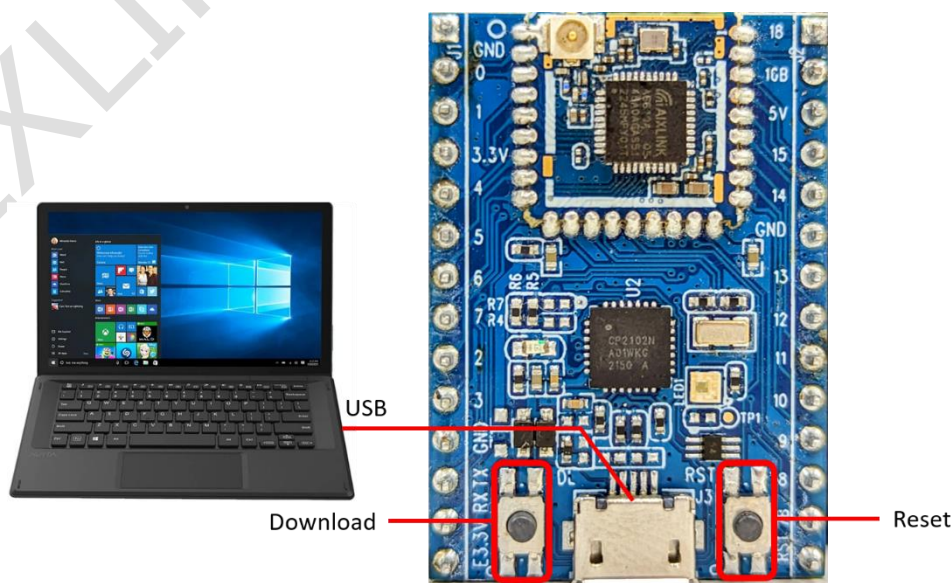


Figure 4: EVK KIT power supply and programming control

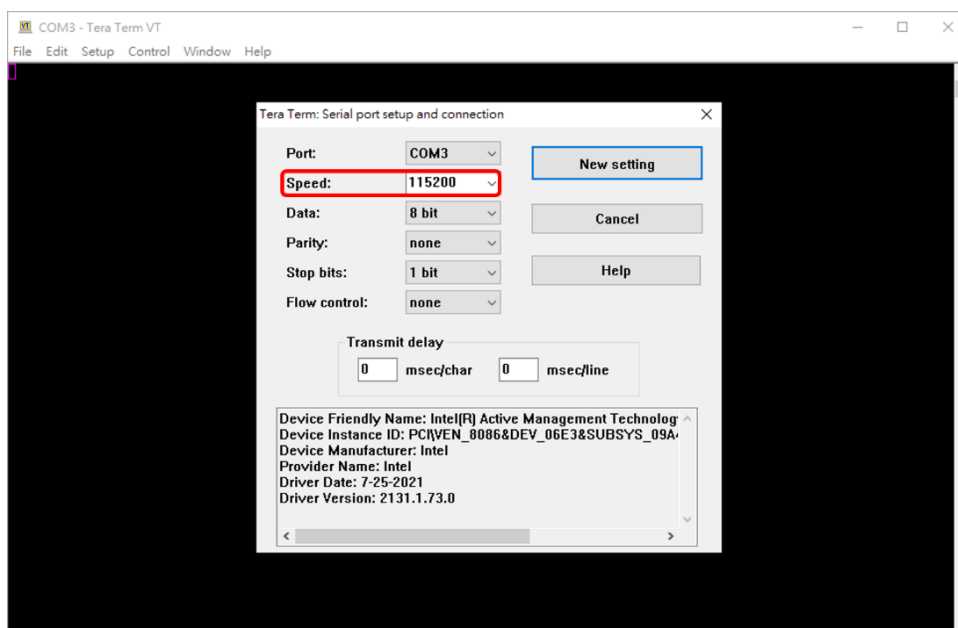


Figure 5: Baud rate setting

Burning Applications

3.1 Burning Software

The A6610 EVK module is programmed with Flash_Tool_V0.1.5 software. The FW.bin file and the corresponding Config.ini file must be prepared before burning. The FW and Config files must be in the same folder path when burning.

名稱	修改日期	類型	大小
Flash_Download_PB_Sorting.ini	2022/8/31 下午 0...	組態設定	1 KB
sorting.bin	2022/10/17 下午 ...	BIN 檔案	1,546 KB

Figure 6: Bin and Config.ini setting

3.2 Burning Process

The A6610 KIT must be connected to the computer before programming. Open Flash_Tool_V0.1.5 software, please refer to Figure 7 for the interface configuration; please refer to Figure 8 and the description for the programming procedure.

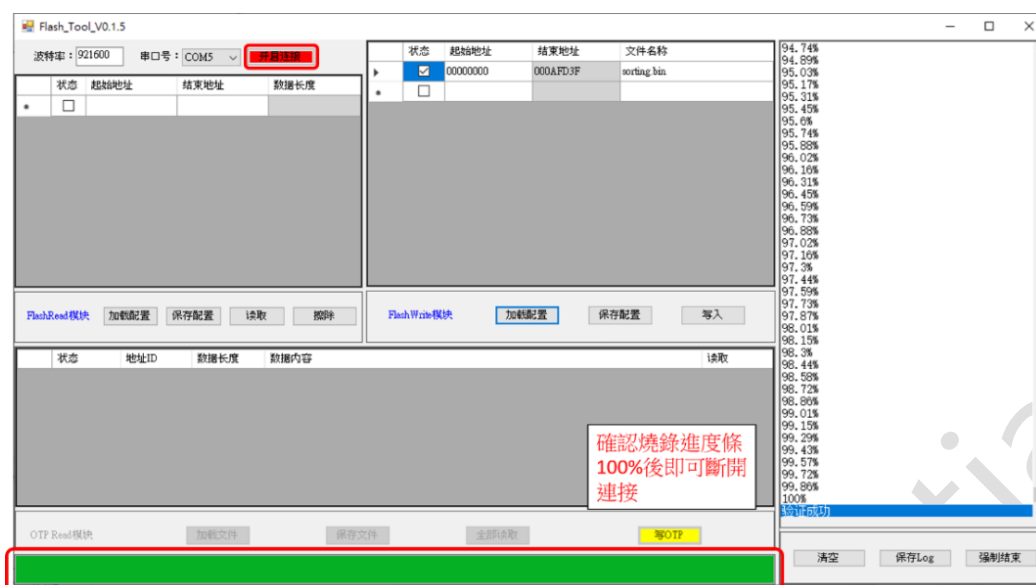


Figure 7: Burning interface

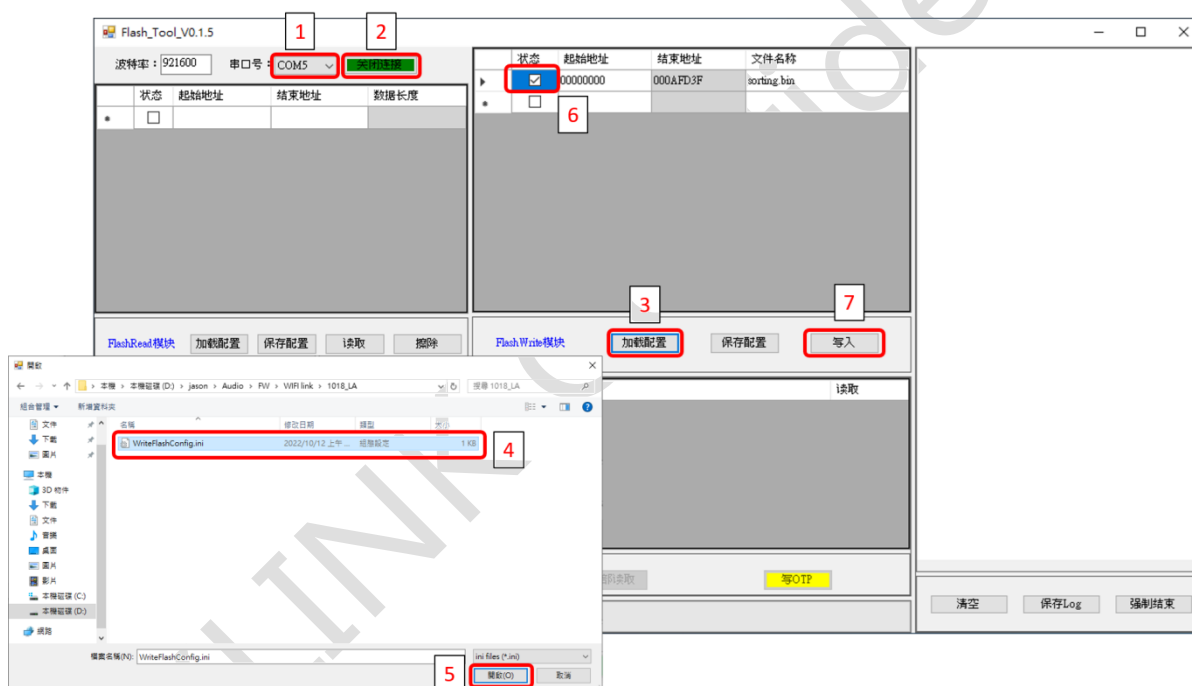


Figure 8: Burning steps

- ① Set the serial port.
- ② Turn on the connection and the button turns green. Make sure the serial software is disconnected before performing this step.
- ③ Load the configuration.
- ④ Select the Config.ini file in the target path
- ⑤ Confirm to open
- ⑥ Select the FW file to be burned
- ⑦ Click on Write
- ⑧ Press and hold the Download button and short press the Reset button to enter the burning mode, as shown in Figure 9
- ⑨ Confirm that the burning progress bar is 100%, you can disconnect and finish burning

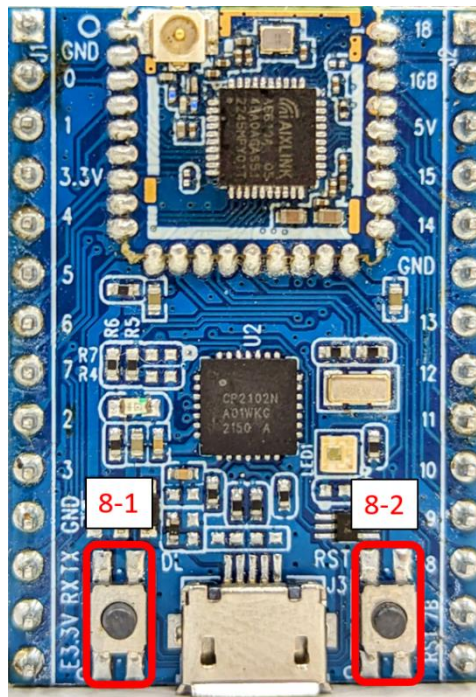


Figure 9: Enter Download mode